

Museum News

Issue Eight — Winter 2015

Calendar of Events

~ Heritage Week

Piccadilly Mall, Salmon Arm
Monday, February 16, 2015 –
Saturday, February 21, 2015

~ Heritage Night

Enderby Museum
Friday, February 20, 2015
7:00 pm

~ Museum Memberships

Museum memberships were due in November; remember to renew your membership for 2015! Memberships are \$10 for individuals, and \$15 for families.

Enderby & District Museum

Box 367, 901 George Street
Enderby, BC V0E 1V0
250-838-7170

enderbymuseum@gmail.com
www.enderbymuseum.ca

Winter Hours: 12:00 pm - 4:00 pm
Summer Hours: 10:00 am – 4:00 pm
Tuesday – Saturday

Heritage Week

Main Street: At the Heart of the Community

The theme for Heritage Week this year is Main Street: At the Heart of the Community.

This year's theme was the inspiration for a new exhibit at the museum. The first three displays for this new exhibit are finished in time for Heritage Night, and feature grocery stores, hardware stores, and doctors' offices/pharmacies.

The museum has sent two display boards with photos of Cliff Avenue taken from our archives to Piccadilly Mall in Salmon Arm for Heritage Week, which runs from Monday, February 16th to Saturday, February 21st.

Heritage Night at the museum is the highlight of the week. The event starts at 7:00 pm on Friday, February 20th, and our guest speakers are Tony Vetter and Don "Moose" MacPherson. Refreshments will be served following the meeting, and remember to bring your stories about Enderby's main street.



Livingston Park, on the corner of Cliff Avenue and Belvedere Street, June 25, 1938. (EDMS #0031)

Curator's Report

by Naomi Fournier

I'm going back to school! Right now I am taking the Collections Management course from the University of Victoria, and learning how to manage the museum's collections. This course is part of the Cultural Resource Management program that is offered at UVic, and is taught via distance education. There are students from all across Canada and the United States enrolled in the course, and the teacher is from Toronto.

One of my course assignments was writing a short history about the Enderby Museum and our collections. I really enjoyed spending a couple days in our archives, researching the history of the museum. I'm sharing part of my assignment with you in this newsletter.

This assignment is an example of the type of research that you can do at the museum, and the museum volunteers and I would be happy to assist you with finding what you are looking for in the archives.

Museum memberships are due again! If you didn't already renew your membership for 2014/2015, you will want to do that right away if you wish to keep receiving our quarterly newsletter. Memberships are \$10 for individuals, and \$15 for families.

Memorials & Donations

The museum wishes to thank Marilyn Goodfellow for her donation to the museum in honour of our long-time member and volunteer, Gerrie Danforth.

We also received a generous donation from Glen and Marie Stickland.

The Christmas Bake Sale was a success and raised \$467, and the Toonie Tree raised \$86.00. Doris Shipmaker was the winner of the 50/50 draw, and she donated her winnings back to the museum. Thank you Doris!

History of the Enderby Museum

by Naomi Fournier

The idea of a community museum was initiated by four grade 10 students at the Enderby Junior Secondary School, who began working on plans for a museum in the autumn of 1972. In the summer of 1973 the students were awarded an Opportunities for Youth grant and given a room in the school basement for storage; they began collecting and cataloguing donations, interviewing oldtimers, and building display cases.

The Enderby and District Community Museum Society was registered with the province on September 5, 1973. The society began making plans to build a museum complex—a pioneer log village—and city council promised land on the north side of the Barnes Park playground to the society.

In 1979, the Provincial Museum Advisor, John Adams, encouraged the society to choose a unique theme for the museum to attract residents as well as tourists. By early 1980, the society wanted to build a 6,000 square foot museum building to house farming and logging equipment. The price tag for the building was \$125,000, which the museum society would raise money for, and they approached the City of Enderby and the North Okanagan Regional District, requesting a referendum to ask taxpayers if they would be willing cover the annual operating costs of \$25,000.

On November 15, 1980, voters went to the polls and the museum referendum was defeated with a 70% no vote. With 186 votes for and 436 votes against the museum referendum, the museum society was encouraged to reconsider their plans.

In 1982, the museum society approached city council, who was outgrowing the city hall building, and requested that they donate the 1912 building to the museum when they relocated. The society stated that they were scaling down their program and expectations, and would operate the museum with volunteers and donations.

In 1987, the City of Enderby announced that they were the recipients of an Expo Legacy grant

and would be building an addition to city hall to house their offices, with space in the basement to house the museum and the library.

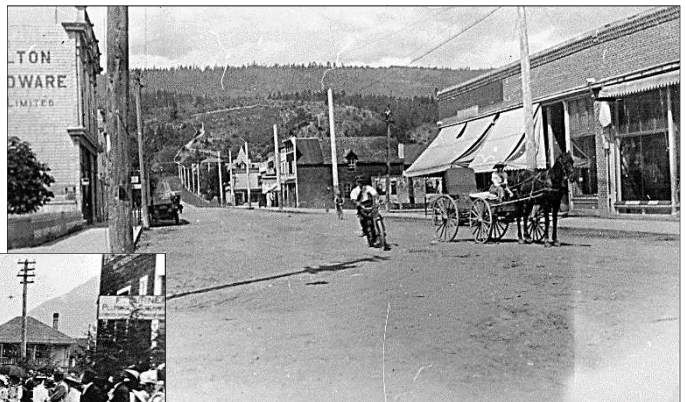
The museum society received a JobTrac grant to hire three full-time employees for six months to catalogue artifacts and photographs and get the museum ready for the official opening on May 28, 1988. The following year, the society hired their first part-time curator, Joan Cowan.

The library relocated in August 2002, and the museum society again approached city council, this time to request that they be allowed to take over the old library space. Their request was approved, and the museum expanded in size from 1,400 to 3,200 square feet. The grand opening took place on February 21, 2004, during Heritage Week, and the

expanded museum boasted additional artifact storage space and new displays, as well as a large archives and research area.

In 2011, the Enderby Lions Club built a 1,200 square foot gazebo in Barnes Park which is called the 'Museum in the Park', and houses the museum's larger artifacts, like Enderby's first fire truck and a large antique butter churn. Many of the larger artifacts which are not on display are housed in Springbend Hall, which was donated to the museum society in January 1997.

This brief history of the museum was written as part of one of my assignments in my Collections Management course at the University of Victoria.



Clockwise, from top left: Cliff Avenue looking west, 1950 (EDMS #1206); Cliff Avenue looking west, 1918 (EDMS #0365); First Silver Cup annual race, May 24, 1918 (EDMS #0584); Hose reel races, May 24, 1910 (EDMS #5391)